

Missouri State Beekeepers Association
P.O. Box 448 Oak Grove, MO 64075

www.mostatebeekeepers.org

February 2011

Eugene Makovec
Editor

editor@mostatebeekeepers.org

Don't look now, but that warm glow in the east is a brave February sun burrowing its way through the dense fog of winter. Sugar maples feel the warmth, and begin to stretch their limbs. Crocuses push tender shoots against the still-frozen turf, stymied for now but waiting, watching for an opening. And your intrepid bees, clinging to a dwindling supply of winter honey, send warm-day sorties in search of the life-giving pollen that will cue preparations for Spring.

Welcome a new beekeeping year at our annual Spring Meeting, March 11-12 in Branson

Please join us for our Spring Meeting at the Lodge of the Ozarks in Branson, MO. We have an exciting agenda planned, with special events the day before and the day following. Remember, communication and learning are the keys to successful beekeeping. Being with other beekeepers is a great time for sharing ideas and just plain old fellowship.

We are offering lodging at the rate of \$70.00 per night, suites included. You will need to call before March 1 and ask for the specified group block in order to receive this negotiated rate; the earlier you book, the better room/suite you will get. This rate includes a breakfast buffet and parking. We will be within walking distance of several shows. For more information: <http://www.lodgeoftheozarks.com/> • Lodge of the Ozarks, 3431 W. Hwy. 76, Branson, MO 65616 • 417-334-7535 • 800-213-2584.

Branson, MO, nestled in the lakeside beauty of the Ozark Mountains, is America's affordable, wholesome family entertainment capital that emphasizes fun, comfort and the feeling of being right at home. Featuring an array of live theaters and attraction venues and active recreational pursuits, the community embodies essential American values such as patriotism, faith, courage and generosity of spirit in a warm inviting atmosphere that is truly genuine and heartfelt. <http://www.explorebranson.com/>

We are negotiating special prices for the shows and attractions, just for the beekeepers.

Our special guest speakers will be:

Dr. Don Steinkraus: Professor – Biological Control with Microbial Pathogens, Department of Entomology - University of Arkansas. Expertise and instrumentation: Epizootiology, IPM and biological control with insect pathogens, apiculture, scientific photography, insect anatomy.

continued on page 8

INSIDE THIS ISSUE

<i>From the President</i>	2	<i>From the Queen Chair</i>	9
<i>Honey Drop coming soon?</i> ...	3	<i>Spring Meeting vendors</i> ...	9
<i>New funding for U.S. marketing</i>		<i>Place your orders now</i>	
<i>Cookin' with honey</i>	3	<i>Meeting in Galveston</i>	10
<i>Honey pecan pie</i>		<i>Local associations</i>	13
<i>Spring Meeting program</i>	4	<i>Membership application</i> ..	14
<i>Beginners' workshops</i>	6	<i>Honey Queen report</i>	15
<i>Spring Meeting registration</i>	7	<i>Directory of officers</i>	15



From the President

by Grant Gillard

I was still in college when John Hinkley attempted to assassinate then-President Ronald Reagan. At the time, Vice-president George H.W. Bush (yeah, the other, older guy) was on Air Force Two flying over Texas. Communication with the Vice-president was limited.

The Reagan cabinet leapt into action, and in this time of turmoil and potential crisis, the various officials tried to sort out the presidential succession and transfer of power as set out in the 25th Amendment to the Constitution. Tensions were running high. It was a media frenzy. Who is in charge?

Out of the chaos emerged the Secretary of State, Alexander Haig, who declared, "As of now, I'm in control here."

Well, we've had a rather civil transition of the presidency of our state beekeeping association. I could say, quoting General Haig, "As of now, I'm in control here."

But in reality, I'm not. You are.

I think we often forget that the real power of any organization is located in the membership. Leaders and officials can set out on any one of a hundred quests, but if they have no followers, they have no power. This state organization belongs to you. Your hopes and desires are what will drive our organization to serve the needs of our members.

As your President, I hope you'll feel empowered and enabled to bring fresh ideas to the table, to help us make our organization run efficiently and, perhaps most importantly, to meet the needs and expectations of the membership. I anticipate the executive board

will work to make these hopes and dreams a reality. And, of course, we'll need your help as well as your input.

Which brings me to a second thought. One of my colleagues taught me an important truth when trying to bring new programs to an organization. He said:

"Every good idea needs a champion."

In times of change, in times of innovation, good ideas need someone to be the cheerleader, the advocate, the promoter, the catalyst, the coach, even the mid-wife. Change is difficult and new ideas don't take root easily. A champion breathes life into new ideas and shelters them from the onslaught of criticism and doubt.

When all around is dark and it looks like the idea is going down the tubes, a champion shines a light to illumine a path forward for the rest of us.

They say the seven deadliest words for any organization are, "We've never done it that way before."

Sometimes we just need a champion to remind us there are other ways to do things and we need not fear trying something different. Beekeeping is in a precarious place. It's never been more challenging to be a beekeeper, especially for a beginner. We need each other, more than ever.

But that's why we have this state association: to work together, encourage one another, and bring our hopes and dreams to reality.

All the best,

Grant Gillard



6800 North Kircher Road
Columbia MO. 65202-7652

573-474-8837

fax 573-474-5830

walkaboutacres@agristar.net

www.walk-aboutacres.net

**Your local dealer for
beekeeping supplies**

**We generally have all of the basic
supplies in stock.**

***Make your visit a family outing! We
have a "walk-about" farm,
greenhouses and honey ice cream.***

Bee Culture

THE MAGAZINE OF AMERICAN BEEKEEPING

Here's what you'll get

- Honey bees • Beekeeping • Beekeepers •
- Honey • Propolis • Bee Equipment •
- Beeswax • Current Research •
- Beginning Beekeeping How-To •
- Sideline Beekeeping • New Products •
- Honey Recipes • Book Reviews •
- Market Reports • More • More • More • More!

Skip the secretary • Call Today
Tell Us What Club You're In –
Get The Discount

**GET YOUR
BEE CLUB DISCOUNT
\$21/1 year
\$38/2 years**

Send check to:

Bee Culture Magazine
623 W. Liberty St., Medina, OH 44256
or call 800-289-7668, Ext. 3220
with credit card

DRAPER'S SUPER BEE

Specializing in:

Bee Pollen

Beekeeping Supplies

Containers

Observation Hives

Call for a free pollen sample & supply catalog
(402) 274-3725



Honey Drop™ founders pay a visit to the Dragon's Den

TV program provides company with investment to “grow our brand into the US market”

by Eugene Makovec

Honey Drop™, the ground-breaking dried honey product from Island Abbey Foods of Canada, is about to receive a sizable cash infusion thanks to an appearance on the popular Canadian television program *Dragon's Den*.

Dragon's Den, an international sensation that premiered in Japan in 2001 as *Money Tigers* and airs in the United States as *Shark Tank*, features entrepreneurs pitching their products to a group of multi-millionaire investors who, if duly impressed, offer an investment in return for a stake in the company.

On the show's January 19 episode, brothers John and Justin Rowe of Island Abbey pitch their Honibe™ brand Honey Drop™, a solid, dried honey product individually packaged for retail and foodservice sale, asking for \$1,000,000 Canadian to help “grow our brand into the US market” -- and offering up to 20 percent equity in the company in trade.

Following a convincing sales pitch and some tense negotiation -- “You know what a good deal is? When both sides are unhappy,” says investor Kevin O'Leary of O'Leary Funds -- the brothers come away with \$600,000 in cash and another \$400,000 line of credit in exchange for a 35 percent

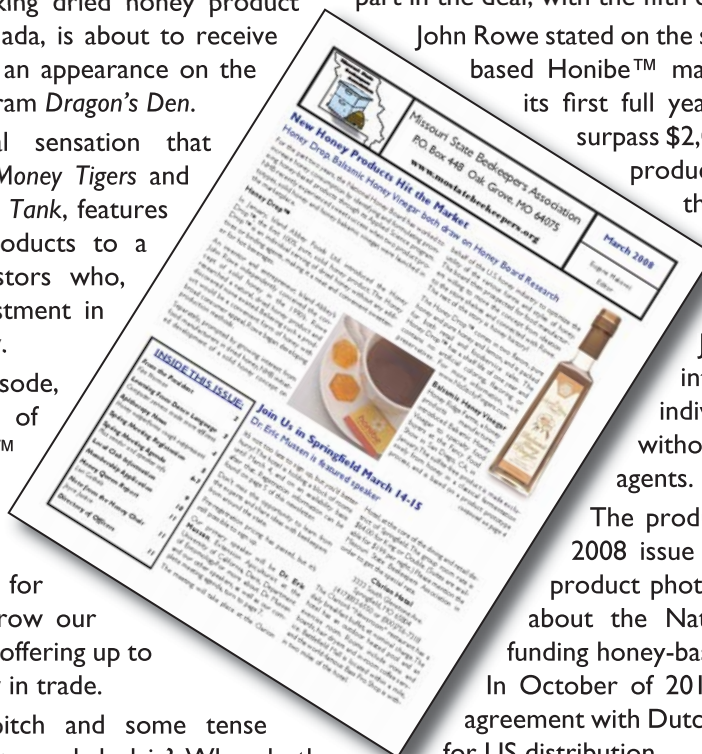
stake in the company. Four of the program's five Dragons take part in the deal, with the fifth choosing to decline.

John Rowe stated on the show that Prince Edward Island-based Honibe™ made \$650,000 in sales in 2009, its first full year of business, and expects to surpass \$2,000,000 in 2011. The company's product line also includes candies and throat lozenges.

John Rowe began research into a dried, portable form of honey in the 1990s, and in January of 2008 the company introduced Honey Drop™, an individual serving of dried honey without any additives or binding agents.

The product was featured in the March 2008 issue of this newsletter (inset, with product photo at center), as part of a story about the National Honey Board's role in funding honey-based food product development. In October of 2010 the company announced an agreement with Dutch Gold Honey of Lancaster, PA, for US distribution.

Additional product information is available at www.honibe.com. The *Dragon's Den* episode can be viewed at <http://bit.ly/gUTaur>.



Cookin' with Honey!

Honey Pecan Pie

- 1 C Honey
- 3 Well-beaten Eggs
- 2 T Sugar
- 1/4 C Nonfat Dry Milk Solids
- 1/4 C Butter
- 1-1/2 C Pecan Meats
- 1/2 t Vanilla
- One 9" Unbaked Pastry Shell

Directions

Mix honey with eggs. Cream sugar, nonfat dry milk solids and butter, and add to honey-egg mixture. Stir in pecans and vanilla. Turn into an unbaked 9" crust and bake at 375 F for 45 minutes, or until center tests done with knife.

Honey Pecan Tea cakes: Line very small muffin tins with rounds of pastry and fill each with 1 teaspoon of the above mixture. Bake 10-12 minutes at 425 F.

MANN LAKE

WE KNOW BEES

800-880-7694

FREE SHIPPING!!*

*On Most Orders Of \$100 Or More. Lower 48 States Only.
Subject To Change Without Notice.

Join Our Bee Bucks Program



Earn 2-1/2% Back On Purchases








An Employee Owned Company
www.mannlakeltd.com



2011 Spring Meeting Program

(subject to change)

Thursday, March 10

4:00-6:00 **Free wine & cheese social** - Hospitality Room 255. Wines provided by 7C's Winery. Non-alcoholic drinks also available. Donations accepted for the Honey Queen fund.

6:00-11:59 Hospitality Room open - Room 255

Friday, March 11

8:00-11:59 Hospitality Room open - Room 255

8:00-10:45 Executive Board Meeting - Timber Creek Small

9:45 Registration open
Vendors Open - Crystal Hall
Queen Silent Auction opens

10:45 Cooking with Honey contest setup
Beekeeping Artwork contest setup

11:00-11:10 Welcome

11:10-12:00 **CSI in the Beehive Trying to Find the Cause of CCD**, Dennis vanEngelsdorp - Crystal Hall

12:00-12:45 **TBA**, Dr. Don Steinkraus - Crystal Hall

12:45-1:15 Break for lunch

1:15-1:30 **A Ton of Honey**, Grant Gillard - Crystal Hall

1:30-2:15 **Honey Bee Epidemiology: What is Killing Bees?** Dennis vanEngelsdorp

2:15-3:00 **TBA**, Dr. Don Steinkraus - Crystal Hall

3:00-3:30 Break, visit with vendors

3:30-4:15 **TBA**, Dennis vanEngelsdorp - Crystal Hall

4:15-4:45 **National Honey Bee Pest Survey**, Collin Wamsley, Missouri State Entomologist - Crystal Hall

4:45-5:15 **Eastern Region Director Meeting** with Eastern Region beekeepers, Steve Harris - Crystal Hall

6:30-9:00 **Beekeeper of the Year and Mentor of the Year Banquet** - Club Vegas

9:00-9:30 **Eastern Region Director Meeting** with Western Region beekeepers, Brian Norris - Club Vegas



2011 Spring Meeting Program (continued)

Saturday, March 12

- 7:30-8:00 **South Region Director Meeting** with South Region beekeepers, Dave Kayser
- 8:00-8:20 Welcome - Crystal Hall
 Invocation - Rev. Don Buford
 Patriotism presentation, Lillian-Grace Misko, Missouri Honey Queen
- 8:20-8:25 **Missouri Honey Queen Report**, Joyce Justice
- 8:25-10:15 **The Medicine Chest Known as the Beehive (Part 1)**, Reyah Carlson - Crystal Hall
- 9:00-9:45 Alternate Activity: **Q & A**, Dennis vanEngelsdorp - Room 251
- 10:15-10:45 Break, visit with vendors
- 10:45-11:35 **The Medicine Chest Known as the Beehive (Part 2)**, Reyah Carlson - Crystal Hall
- 10:45-11:35 Alternate Activity: **Q & A**, Don Steinkraus - Room 251
- 11:00 (Dennis vanEngelsdorp departs)
- 12:00-1:00 **Lunch** - Club Vegas
- 1:00-1:45 Breakout sessions:
Apitherapy Questions and Bee Stings, Reyah Carlson - Room 251
Farmers' Markets, Vera and Art Gelder - Timber Creek Small
Nicotine Bees, John Timmons -
TBA
- 1:45-2:15 Break
- 2:15-3:05 **TBA**, Dr. Don Steinkraus - Crystal Hall
- 3:05-3:55 **TBA**, Richard Houseman, Associate Professor of Entomology, University of MO - Crystal Hall
- 3:55 Annual Business Meeting, followed by raffle prize drawings - Crystal Hall
- 8:00 **Jim Stafford Show**, reg. cost \$35.50, but if at least 20 people go, rate will be \$27.35. Please send info and check for full amount to Pam Brown, must receive by Feb. 20.

Sunday, March 13

Recommended Sunday brunch at either the Keeter Center (College of the Ozarks) or Big Cedar Lodge. No discount given, but if enough people want to go, we can make group reservations so members can sit together. Sign up at registration table.



Local clubs schedule beginners' workshops

Eastern Missouri Beekeepers: Our highly successful workshops for beginners and experienced beekeepers will be repeated from 8:00 am until 5:00 pm this February 12th at Maritz in Fenton.

The courses will be led by **Clarence Collison, PhD**, Emeritus Professor of Entomology and Emeritus Head of the Department of Entomology and Plant Pathology at Mississippi State University; **Rick Fell, PhD**, Professor Emeritus in the Department of Entomology at Virginia Tech; and **Grant Gillard**, President of the Missouri State Beekeepers Association. Tuition cost is \$90 per person. Please register by February 5 at www.easternmobeekkeepers.com or call (314) 894.8737.

Three Rivers Beekeepers and the University of Missouri Extension Center for St. Charles County are offering a three-part Beginning Beekeeper Class this spring. Come learn about the wonderful honeybee and how to manage them and their home, the beehive.

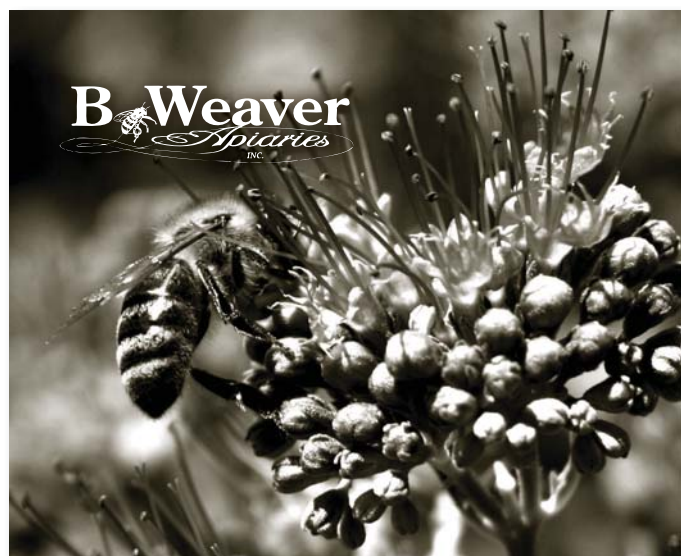
WHEN: March 27th, 2011 (2-8 pm); March 28th (6-9 pm); and March 29th (6-9 pm). An optional class supplement covering sustainable techniques using organic, natural beekeeping alternatives will be presented on Saturday, April 2nd (5-9 pm).

WHERE: University of Missouri Extension Center at 260 Brown Rd. in St. Peters.

HOW: Visit www.threeriversbeekeepers.com or call the Extension Center at 636-970-3000 for reservations and payment of \$50.00 (all inclusive).

Missouri Valley Beekeepers will hold a "Beginning Beekeepers Class" on March 5, 2011 (tentative date). This is a great introduction and education for anyone contemplating keeping bees. It will be held at Clearview Feed and Seed Store on Highway 47 in Union, MO. For registration and more information, contact Stephany Sullivan at 636-584-9817 or sasullivan55@yahoo.com.

Jefferson County Beekeepers will hold a Beginning Beekeepers workshop in Hillsboro sometime in early March. For more information, contact Scott Moser at smoser@accessus.net or 636-575-5434.



Queens & Bees

Chemical free beekeeping since 2001.
beeweaver.com



FOR SALE:

PACKAGE BEES

For April pickup in Lynnville, Iowa
or Hamilton, Illinois.

These are 2# and 3# packages from
C.F. Koehnen and Sons. Your
choice of Italian or Carniolan
queens.

Carniolan queens will be available
separately beginning in mid April.

Contact Phil Ebert:

641-527-2639

ehoney37@netins.net

www.eberthoney.com

Five-frame Nucs for Sale

Young 2011 queens

Buckfast, survivor Italian, Carniolan

\$85 in Plasicell nuc boxes; pickup in Eldon MO

Come with Florida health inspections

\$20 deposit

John and Delores Sauls

407-431-3714 • 407-431-3715

hahunltd@att.net • riversrunapiary@yahoo.com

Missouri State Beekeepers Association Spring 2011 Branson Meeting Registration Form

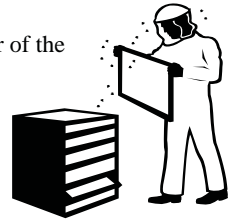
List all attendees' names as you want them printed on the name tags, including any pertinent information such as Beekeeper of the Year (list year), name of honey business, etc.

NAME: _____

ADDRESS: _____

CITY: _____ STATE: _____ ZIP+4: _____ LOCAL CLUB: _____

PHONE: _____ E-MAIL: _____



PRE-REGISTRATION (must be received by February 28, 2011)

MEMBER	\$25 X _____ = _____
MEMBER FAMILY (must have paid 2011 dues as a family)	\$35 _____
NON-MEMBER	\$35 X _____ = _____
SATURDAY ONLY MEMBER	\$15 X _____ = _____
SATURDAY ONLY FAMILY (must have paid 2011 dues as a family)	\$25 _____
SATURDAY ONLY NON-MEMBER	\$20 X _____ = _____

LATE PRE-REGISTRATION

MEMBER	\$28 X _____ = _____
NON-MEMBER	\$38 X _____ = _____
SATURDAY ONLY MEMBER	\$18 X _____ = _____
SATURDAY ONLY NON-MEMBER	\$25 X _____ = _____

FRIDAY NIGHT QUEEN BANQUET

Roast of Pork Loin	\$21 X _____ = _____
Fried Catfish	\$21 X _____ = _____

SATURDAY LUNCH – Beef Brisket

\$12 X _____ = _____

MSBA – 2011 MEMBERSHIP

Individual	Renewal	New	\$15.00	_____
Family	Renewal	New	\$20.00	_____

Queen Fund Donation

Meeting Fund Donation

TOTAL: _____

Please make checks payable to Missouri State Beekeepers Assn. Send to: Cathy Hogan, PO Box 281, Boss, MO 65440-0281. If you pre-register and then cannot attend, your registration fee will be considered a donation and no refund will be made. If you pay for meals and we are able to sell them, you will be refunded for those. Please note – no receipts will be sent. Checks will be deposited after the meeting.



continued from page 1



Dr. Don Steinkraus (continued)

Education:

- B.A. Anthropology, Cornell University, Ithaca, NY 1975
- M.S. Mycology, University of Connecticut, Storrs, CT 1979
- Ph.D. Insect Pathology, Cornell University, Ithaca, NY 1987



Dennis van Engelsdorp: Bee Expert – Popular speaker at American and European bee meetings, regarding colony losses and standardizing data collection and presentation standards. Studying colony collapse disorder -- the alarming, worldwide disappearance of worker bees and Western honey bees, bee disease epidemiology, and the internal anatomy of the honey bee. Honeybee Researcher – Penn State

Education:

- B.S. Agriculture, University of Guelph, Guelph, Ontario 1992
- M.S. Environmental Biology, Univ. of Guelph, Guelph, Ontario 1995
- Doctorial Candidate, University of Pennsylvania 2011



Reyah Carlson: Practitioner of Apitherapy – Has been stung by bees more than 25,000 times. On purpose. She was a featured speaker at the 2010 North American Beekeepers Conference held in Orlando. Reyah operates out of her home, drives to some of her clients' homes throughout Vermont and has used the therapy on herself with positive results. She has given stings to nearly 3000 people and has traveled the world to spread the word about bee venom therapy. She has appeared in National Geographic and on the Discovery Channel.



Contests: All entries to be submitted March 11, 2011. Entries are open to the public; however, only MSBA members in attendance can be declared winners. There will be two sets of winners. The first set of winners (1st, 2nd and 3rd) will be selected by a judge; the second set will be People's Choice, with each pre-registered attendee allowed one vote. The owners of all entries will be required to sign an attached index card giving MSBA permission to use their entry in the newsletter, website, calendar and cookbook.

1. Cooking With Honey – judged by the Chef of the Rafters Restaurant

Entries are to be in the Board Room by 11:30AM. Honey is to be the principal sweetener. Commercial mixes may not be used, no other ingredient restrictions. Please type or print the recipe on a 3 x 5 card with your name on the back, it will be kept to possibly be included in the MSBA newsletter, website, calendar and cookbook. Put your name on the back of the recipe card. Bread or cookies should not need refrigeration. Entries become property of MSBA and will be served at break time in the Hospitality Room. The categories are:

- Quick Bread - 2
- Cookies - 24
- B-B-Q Sauce - 1 quart
- Scones - 24

Entries could be judged on: Presentation, Best use of honey, Amount of honey used (compared to other entries in category), Taste/Flavor, Texture, Crumb/Tenderness, Color, and Consistency.

2. Artwork - Paint, ink, pencil, or watercolor

All entries must portray some aspect of bees and/or beekeeping. A 3" x 5" white card on which a brief description of the craft is typed/printed must accompany each entry, including name, address, e-mail. Utmost care will be taken in handling all entries, but MSBA is not responsible for loss or damage. Entrants desiring to insure their work must do so at their own discretion.

FALL MEETING PREVIEW

October 28-29, 2011, with special events on October 27, Country Club Hotel, **Lake of the Ozarks**. Special speakers include Dr. Marla Spivak (University of Minnesota) Ed Levi (Arkansas) and C. Marina Marchese (Connecticut). Contests to be held: Cooking with honey (wheat bread, cake, wings), Soap, Needlework.



Note from the Queen Chair

by Joyce D. Justice

Our Queen has been busy and has worked up a new brochure. Looks like some interesting recipes to try. Let's work on getting the Queen to as many special events as possible. She gets a lot of attention and adds a lot to your event. She traveled a lot of miles as our princess and let's see if we can make more miles in 2011.

Seems impossible that the March Spring Meeting will be here before another Newsletter will be published, but here is a reminder to bring your items to the March Meeting for the silent auction for the Queen's expenses. The time seems to pass fast or I get slower each year in getting things accomplished.

Joyce

WANTED: A. I. Root four frame automatic reversible extractor.
(620) 724-3189 glocksmi@ckt.net

Sharon Gibbons has for sale:

- Dadant **Bottling Tank**, 45 gallon, stainless, double water jacket - \$1200.
- **Barrels** \$10 and five-gallon **buckets** \$1
- Free old **Bee Culture** and **ABJ** magazines, dating back to the early '80s
- Kelley **Liquefying Tank** \$100 stainless (holds 3-60# buckets in water bath)
- 2 **German-style box hives**. Call for description. Built by beekeeper/cabinetmaker Max Theil. \$100 each or best offer.

636-394-5395 or sgibbons314@att.net

Support our meeting vendors and advertisers

As of press time, the following vendors had confirmed plans to attend the meeting. You can save on shipping costs by placing orders ahead of time to be picked up during the meeting.

Walter T. Kelley Co.*

All beekeeping supplies

800-233-2899

www.kelleybees.com

Femme Osage Apiary*

Handcrafted woodenware & bee supplies

636-398-5014

femmeosage1@aol.com

Ian and Pam Brown

Walkabout Acres*

All beekeeping supplies

573-474-8837 FAX 573-474-5830

walkaboutacres@agristar.net

Vera and Art Gelder

Sharon Gibbons*

Bee collection from last 25 years

636-394-5395

sgibbons314@att.net

Reyah Carlson

Soaps, creams and other health products

*See ad in this issue

There will be a Buzz in Branson March 2011

As you already know, we have an upcoming semi-annual meeting planned for the spring. Because we will be in a great travel area, I am planning additional events for beekeepers and their families/friends to enjoy at a discount rate before and after the meeting. Please let me know what shows/venues you are interested in attending, so I can negotiate cost. We have to have a minimum attendance to get the cheaper rates. By completing this form, you are not making definite reservations, just submitting your interest. Please respond ASAP (circle your interest and send it to me or e-mail your choices). ASAP – Pam Brown

SIX - Andy Williams - Butterfly House - Ride the Ducks - Jim Stafford - Baldknobbers - Sunday Champagne Breakfast at Big Cedar - Sunday Brunch at College of the Ozarks - Haygoods - Kirby Van Burch - Yakov - Shoji - Acrobats of China - Hughes Brothers - Branson Country USA Late Show (11PM) - Dixie Stampede - Mickey Gilley - Motown Downtown - Titanic - Showboat Branson Belle - Wax Museum - Ripley's Believe It or Not - Thorncrowne Chapel - other

Pam Brown
1407 Sneak Road
Foristell, MO 63348-2102
femmeosage1@aol.com

Your name: _____

Address: _____

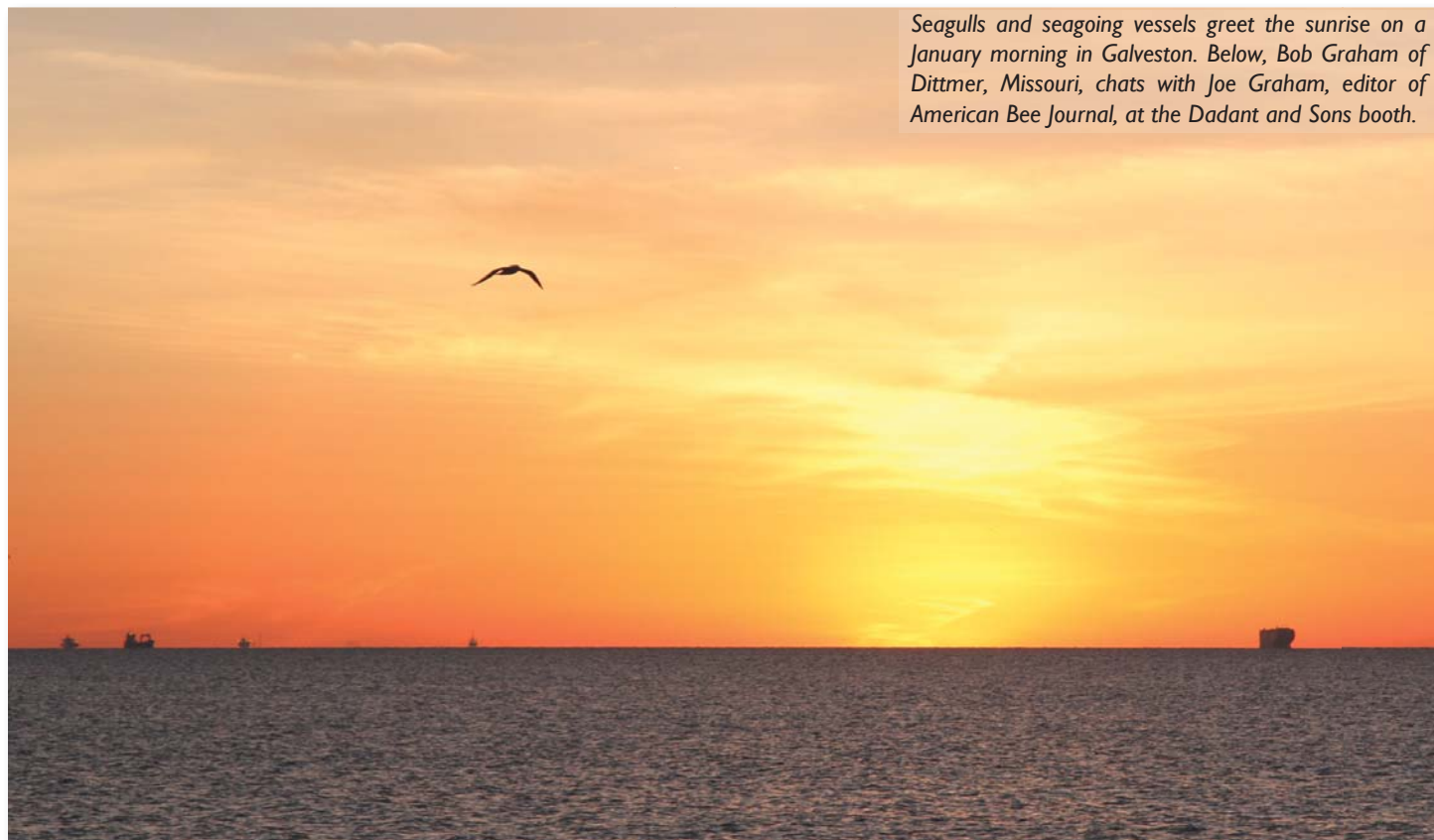
E-Mail: _____



Galveston hosts 2011 North American Beekeeping Conference

Missouri beekeepers make trip to beautiful resort town on Gulf of Mexico

Seagulls and seagoing vessels greet the sunrise on a January morning in Galveston. Below, Bob Graham of Dittmer, Missouri, chats with Joe Graham, editor of American Bee Journal, at the Dadant and Sons booth.



by Eugene Makovec

Some 1100 beekeepers descended upon Galveston, Texas, the first week of January for a joint meeting of the American Beekeeping Federation and the North American Honey Producers. Bob Graham and I made the trip, along with other Missouri beeks including Steve Harris, Ken Norman, Valerie Nichols, Marvin Hook, and I'm sure some others I did not recognize.

The show boasted an impressive lineup of lecturers, including MSBA prez Grant Gillard, and one had to constantly choose between topics in the General Session and the Serious Sideliner Symposium. They also had a meeting room just for researchers, but I wasn't invited there. And then there was the Tradeshow, where there were just too many vendors and too much ground to cover for the normal lunch and break times; I ended up skipping a couple of lectures just to

beat the crowds and meet with merchants.

Conference highlights for me included finally meeting in person Editors Joe Graham of American Bee Journal and Kim Flottum of Bee Culture. Bob and I had dinner with Phil Ebert of Iowa, who advertises package bees in this newsletter and runs a much larger operation than I had imagined. I bought a pollen trap from Lloyd Spears of Ross Rounds, and had a nice talk with him and his wife.

Oh, and I woke up early the second morning, walked across the street and watched the sun rise over the Gulf of Mexico. Awesome!

Femme Osage Apiaries

Ian & Pamela Brown
Certified Master Beekeepers
1407 Sneak Road
Foristell, MO 63348
636-398-5014

Pollination Service
Bees - Honey - Pollen
Wax - Supplies





Going to Branson? Order early!



Walter T. Kelley Co. has everything you need to take care of your honey house and we're ready to bring that to you. We will be attending the Missouri Beekeepers Association meeting in Branson on March 11-12. Place your order by March 8 and we'll bring it to you and won't charge you for shipping.

Check out our website at www.kelleybees.com and sign up to receive our monthly e-mail newsletter!!

Remember, place your order by March 8 and we'll bring it to you. That's **FREE SHIPPING** just for being there!

WALTER T. KELLEY CO.

"Bees Are Our Business"

807 West Main St. • Clarkson, KY 42726



800-233-2899

www.kelleybees.com

Heartland Honey and Beekeeping Supplies

19201 South Clare Road
Spring Hill, KS 66061
913-856-8356

www.heartlandhoney.com

Four-Frame nucs for sale.

Young laying 2011 Hygienic Italian or Carniolan queens placed into your equipment, NO frame swap. Available early May, weather permitting. Quantity limited. \$100.00. May have some late nucs available with Missouri produced hygienic queens available in late May. NO Deposit required.

Call Scott Moser (636) 575-5434.

THE HAWLEY HONEY COMPANY

220 North Elm Iola, KS 66749
620-365-5956 (After 8 pm 620-365-7919)

White clover honey strained in 5-gallon buckets. We will pack it in your jars for an extra fee.

Bee Equipment - New and Used - Used Extractors
Corn syrup, sugar syrup and SUGAR
Bees -- Frames of brood

Call for prices.

Can deliver to Kansas City, Joplin or Butler, MO

WEAVER'S FAMOUS QUEENS

And Package Bees

Buckfast & All-American

BEEKEEPING SUPPLIES AND BEGINNER'S KITS

THE R WEAVER APIARIES, INC.

16495 C.R. 319, NAVASOTA, TX 77868

Phone (936) 825-2333 FAX (936) 825-3642

EMAIL: rweaver@rweaver.com

WEBSITE: www.rweaver.com

**Stock Up
Now for the
New Season!**

QUALITY WOODENWARE

—A DADANT MANUFACTURING SPECIALTY—

**Ask about
our assembled
woodenware!**

Hive Bodies And Honey Supers

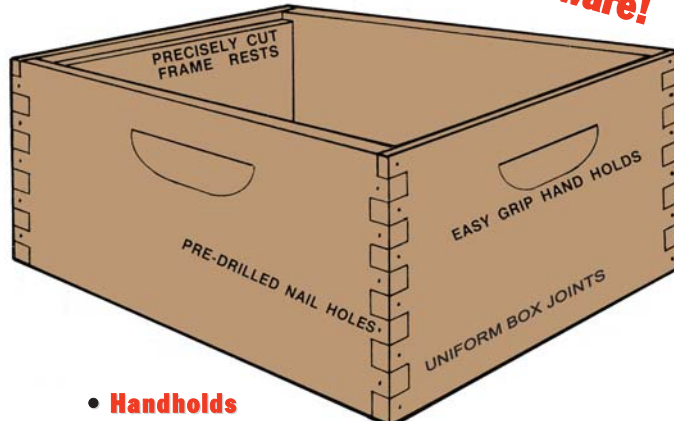
*Dadant Super Construction . . .
Small Details Make A Big Difference*

Ponderosa Pine Wood Products

Our woodenware is manufactured from hand selected ponderosa pine. Each board has been carefully moisture-metered to assure its proper moisture content before it is precision milled into the finished product. All our supers have "pre-drilled" holes for nails to prevent splitting during assembly.

3 Basic Grades

- Select:** A grade that is truly "selected" which allows only very small tight knots and no deviations in the dovetail, rabbets, or hand holds.
- Commercial:** The most widely used by commercial beekeepers. Tight knots are allowed where they occur except in the Dovetail and Rabbet.
- Economy:** The same precise fit as the other two grades but is a lower wood quality. Does not pass quality standards for "select" or "commercial" but is a good serviceable box. Layer knots and knots with crack or splits are allowed.



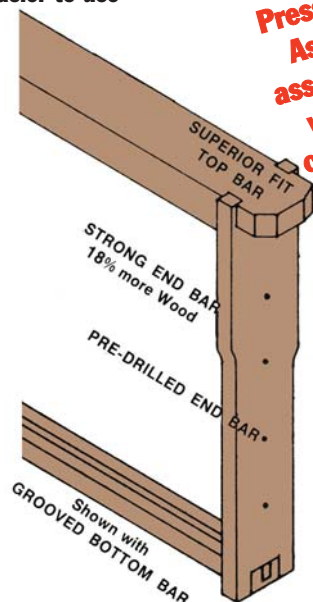
- **Handholds** tapered cut for easy gripping
- **Moisture Metering** before cutting to prevent warping
- **Uniform Dovetails** to prevent cracking
- **Predrilled Nail Holes** to prevent splitting
- **Box Joint Construction** for superior strength
- **Ponderosa Pine** from the Northwest. The best wood for the job.
- **Uniform Frame Rests** provides the proper "Bee Space"

Dadant Quality Frames

Dadant Frame Construction

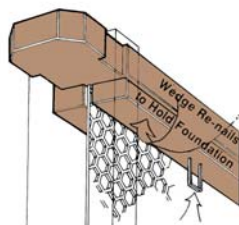
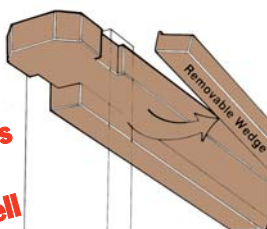
—2 Frame Styles—

- **18% more wood in end bars** (Full $\frac{3}{8}$ " thickness)
- **Grooved bottom bar stronger and easier to use**



**Pressed for time?
Ask about our
assembled frames
with beeswax-
coated plasticell
foundation.**

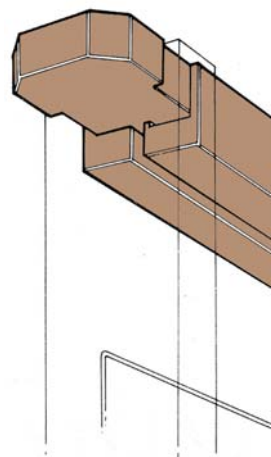
Wedge Top Bar



- 1) Wood wedge is removed from frame.
- 2) Foundation is placed in frame.
- 3) Wood wedge is held firmly against foundation and nailed or stapled in place.

NOTE: Unless otherwise specified, frames with grooved bottom bars will be shipped. **SOLID AND SLOTTED BOTTOM BARS ARE AVAILABLE IN 100 OR MORE QUANTITY.** Please specify bottom bar desired.

Grooved Top Bar



Foundation is placed in bottom-bar groove and top-bar groove. This frame works best with a rigid foundation such as Duragilt or Plasticell.

Dadant & Sons, Inc.

www.dadant.com

1318 11th St., Sioux City, IA 51102
1-877-732-3268 Fax 1-712-255-3233

51 South 2nd St., Hamilton, IL 62341
1-888-922-1293 Fax 1-217-847-3660



Local Beekeepers Associations

1 Beekeepers Association of the Ozarks

4th Tuesday of each month, 7:00 p.m.
The Library Center, 4653 S. Campbell, Springfield
www.ozarksbeekeepers.org

2 Boone Regional Beekeepers Association

3rd Sunday of month, 1:00 p.m., Columbia Insurance Group, 2102 Whitegate Dr. (back door), Columbia
Contact Art Gelder 573-474-8837
<http://beekeeper.missouri.org>

3 Busy Bee Club

4th Tuesday of each month, 7:00 p.m., Cedar County Health Center, Owens Mill Road, Stockton
Neal Lee 417-276-3090 Neil Brunner 314-276-4252
grnthumb@alltel.net

4 Eastern Missouri Beekeepers Association

2nd Wednesday of each month, 7:00 p.m., Powder Valley Nature Center 11715 Craigwood Rd., Kirkwood
Bob Sears, President 314-479-9517
www.easternmobeekeepers.com

5 Golden Valley Beekeepers

2nd Monday of each month, 7:00 p.m. (but varies)
Henry County Courthouse, Clinton MO
Contact Kathy Murphy 660-678-5171
murftk@copper.net

6 Jackson Area Beekeepers

4th Tuesday of each month, 7:00 p.m.
First Pres. of Jackson, 206 E. Washington
Contact Grant Gillard 573-243-6568
gillard5@charter.net

7 Jefferson County Beekeepers Association

2nd Tuesday of each month, 7:30 p.m., Hwy B & 21 Jefferson County Extension Center, Hillsboro
Contact Scott Moser 636-285-7295

8 Joplin Area Beekeepers Association

Last Tue. of each month, 7 pm, SM Bank Community Building (7th and Duquesne Rd), Joplin
Contact Gene Foley 417-624-6831

9 Mid Missouri Beekeepers

3rd Sunday of each month, 2 pm, St. James Tourist Ctr.
Contact Don Moore 573-265-8706

10 Midwestern Beekeepers Association

Nov-March, 2nd Sunday of each month, 2:30 p.m.
April-Oct, 2nd Thursday of each month, 7:00 p.m.
(Schedule varies; please call first to confirm.)
Bass Pro Shop, Independence, Conservation Room
Andy Nowachek, President 913-438-5397

11 Mississippi Valley Beekeepers Association

Last Tuesday of Month in Quincy, IL
Contact Debi Bridgman 573-439-5228

12 Missouri Valley Beekeepers Association

3rd Monday of each month, 7:00 p.m.
Scenic Regional Library, Union
Contact Rodney Angell 573-764-2922
bee143@fidnet.com

13 Parkland Beekeepers

3rd Tuesday of each month, 108 Harrison, Farmington
Contact Gene Wood 573-431-1436

14 Pomme de Terre Beekeepers

2nd Thursday of each month, 7 pm
Missouri Extension Office, Hermitage
Contact Bessi Shryer 417-745-2527

15 SEMO Honey Producers

2nd Thursday of month, Poplar Bluff Extension Office
Contact Ernie Wells 573-429-0222
wells.ernie@gmail.com

16 South Central Missouri Beekeepers Association

1st Friday of month, Howell Electric Coop, West Plains
Monty Wiens, President 417-257-3994

17 Southern MO Beekeepers of Monett "MOBees")

3rd Tuesday of each month, 7:00 p.m.
United Methodist Church, Hwy 37 NW of Monett
Leon Riggs, President 417-235-5053

18 Southwest Missouri Beekeepers Association

1st Tuesday of month, Neosho High School FFA Building
Contact Glenn W. Smith 417-548-2255

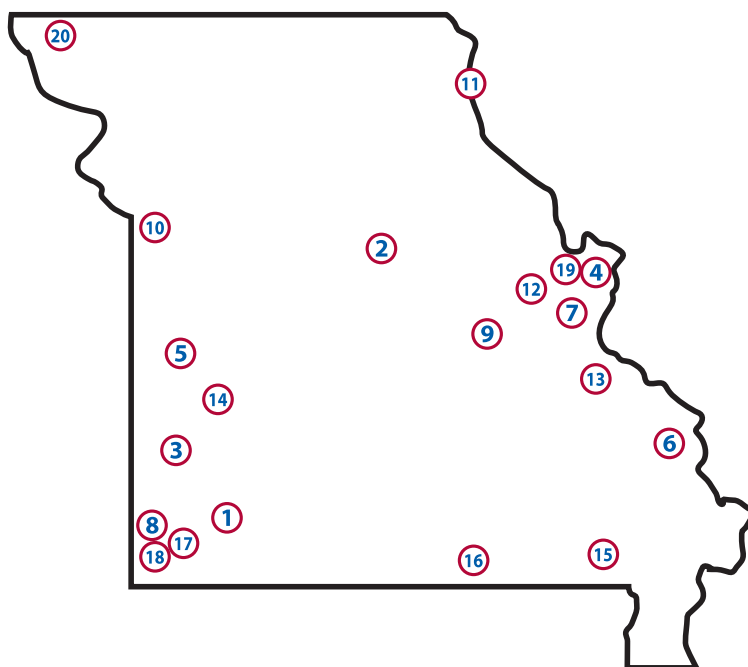
19 Three Rivers Beekeepers

3rd Monday of month, University of Missouri Extension, 260 Brown Road, St. Peters, Missouri, 7:00 p.m.
For info: 2952 Greenleaf Drive, St. Charles, MO 63303
info@threeriversbeekeepers.com

20 Northwest Missouri Bee Busters

1st Monday of odd months, 7:00 p.m.
511 4th Street, Conception Junction, MO 64434
Gerald Auffert, President 660-944-2535

Can't find a local near you? Contact our President or Vice President for assistance starting a new one!



**MSBA Membership Application**

Name _____ Spouse's Name _____

My local association is _____

Address _____

City/State/Zip _____

Phone Number _____ Email _____

NOTE: If you belong to a local association, please pay your state dues through your local club.**State Association Dues** (Check only one box)Adult Membership \$15.00 ☐**Amount Enclosed \$** _____Family Membership \$20.00 ☐

Make check payable to: Missouri State Beekeepers Association

Student Membership \$5.00 ☐

Mail to: P.O. Box 448 Oak Grove, MO 64075

Magazine Discounts: Discounts are available for MSBA members to two beekeeping magazines. You may use their order forms and mail them yourself to the publishers as shown below:

AMERICAN BEE JOURNAL		ASSOCIATION MEMBER SUBSCRIPTION		SAVE 25%
Association _____		Secretary's Name _____		
Subscriber's Name _____		Address _____		
Address _____		City _____		
City _____		State, Zip _____		
State, Zip _____		Phone # _____		
Comments _____				
<input type="checkbox"/> NEW	<input type="checkbox"/> RENEWAL	U.S. <input type="checkbox"/> 1 Yr. - \$19.50	<input type="checkbox"/> 2 Yrs. - \$37.00	<input type="checkbox"/> 3 Yrs. - \$52.15
(PRICES GOOD THROUGH DEC. 31, 2011)		Canada <input type="checkbox"/> 1 Yr. - \$24.50	<input type="checkbox"/> 2 Yrs. - \$47.00	<input type="checkbox"/> 3 Yrs. - \$67.15
Return to: American Bee Journal		Foreign <input type="checkbox"/> 1 Yr. - \$41.50	<input type="checkbox"/> 2 Yrs. - \$81.00	<input type="checkbox"/> 3 Yrs. - \$118.15
51 S. 2nd St., Hamilton, IL 62341				

ROOT PUBLICATIONS		ASSOCIATION MEMBER SUBSCRIPTION		
<i>Bee Culture Magazine</i>				
Please Print Clearly		Secretary's Name _____		
Association _____		Address _____		
Subscriber's Name _____		City _____		
Address _____		State, Zip _____		
City _____		Comments _____		
State, Zip _____				
Phone # _____				
<input type="checkbox"/> NEW	<input type="checkbox"/> RENEWAL	<input type="checkbox"/> 1 Yr. - \$21.00	<input type="checkbox"/> 2 Yr. - \$38.00	For Office Use Only
				Acct. # _____
				Canada - add \$15.00 per year
				All other foreign add \$20/year
Return white copy to: Bee Culture, Subscription Dept., P.O. Box 706, Medina, OH 44258				
Please discard any other forms. Use only this form. Prices subject to change without notice.				



Honey Queen report

by Lillian-Grace Misko

Greetings everyone,

Over winter break I was busy putting together final touches on my new Honey brochure and organizing details with my two colleges. In the midst of that, I welcomed in the 2011 New Year by having the time of my life visiting family in New York. I now am ready and eager for the upcoming events!

It is a blessing to see how the experience of being the Honey Princess and now your Honey Queen has influenced and prepared my path for the future. As you may know, I am pursuing a degree in Public Relations. I can relate with many topics and projects in my classes because of my experience representing the Missouri State Beekeepers Association. Public Relations has a very extensive job description. It has a lot to do with representing a company/organization, building relationships, various responsibilities (writing/researching/etc.), and dealing with matters of crisis. I have a passion for people and sharing information with people. I also look at challenges to be quite exciting. This might be a matter of personal opinion, but I would consider life to be boring without people and challenges. I figure if there are people on this earth, there must be a reason to share life together. I do not look at challenges as a bad thing, but as something to overcome and to add to the journey of life.

With saying all of the above, I understand that beekeeping can be a challenge for the beekeeper and the bees. It is a challenge for bees to make it through the winter and for the beekeeper to keep up during swarm season and with the rewards of a bountiful honey harvest! I admire the beekeepers when they unite in a community and share their art, information and ideas to help each other — keep encouraging each other, it is well worth it!

It was a privilege to present my PowerPoint, "My Journey as Honey Princess", at the Midwestern Beekeepers Christmas Meeting/ Dinner and to be there for the giving of the Beekeeper of the Year award. I would like to congratulate the Midwestern Beekeeper(s) of the Year, Tonya and Jim Fisher!

I look forward to many more upcoming events, including the Eastern Missouri Beekeepers Spring Workshop and the Missouri State Beekeepers Association Spring Meeting.

Lillian-Grace Misko

Missouri Honey Queen 2011



Directory of Officers

- President: Grant Gillard** 573-243-6568
3721 North High Street, Jackson MO 63755
president@mostatebeekeepers.org
- Vice President: John Timmons** 636-940-8202
2952 Greenleaf Drive, St. Charles MO 63303
vicepresident@mostatebeekeepers.org
- Secretary: Steve Moeller** 573-886-0662
7035 N. Kircher Rd., Columbia MO 65202
secretary@mostatebeekeepers.org
- Treasurer: Ron Vivian** 816-690-7516
443 Fricke Road, Bates City MO 64011-8280
treasurer@mostatebeekeepers.org
- Past-President: Scott Moser** 636-285-7295
6600 Davis Lane, Cedar Hill, MO 63016
pastpresident@mostatebeekeepers.org
- Western Director: Brian Norris** 816-668-9365 cell
3388 Mountain View Road Bates City MO 64011-8161
bellhilloperators@yahoo.com
- Southern Director: Dave Kayser** 417-767-2435
76 Canterbury Drive, Fordland MO 65652
southwdir@mostatebeekeepers.org
- Eastern Director: Steve Harris** 636-946-5520
1224 Sherbrooke Road, St. Charles MO 63303
eastdir@mostatebeekeepers.org
- Southeastern Director: Ray Batton** 573-785-1980
3032 N. 14th St., Poplar Bluff MO 63901
southedir@mostatebeekeepers.org
- Program Chairperson: Pam Brown** 636-398-5014
1407 Sneak Road, Foristell MO 63348
femmeosage1@aol.com
- Newsletter Editor: Eugene Makovec** 314-703-7650
4849 Highway V, Villa Ridge MO 63089
editor@mostatebeekeepers.org
- Auxiliary Treasurer: Dolores Vivian** 816-690-7516
443 Fricke Road, Bates City MO 64011-8280
Hlybee@aol.com
- Queen Chairperson: Joyce Justice** 816-358-3893
P.O. Box 16566, Raytown MO 64133-0566
queenchair@mostatebeekeepers.org
- State Fair Chairman: Dean Sanders** 816-456-4683 cell
37804 Old Pink Hill Road, Oak Grove MO 64075
- State Entomologist: Collin Wamsley** 573-751-5505
collin.wamsley@mda.mo.gov
- Associate Professor of Entomology: Richard Houseman**
HousemanR@missouri.edu 573-882-7181
1-87 Agricultural Building, University of Missouri-
Columbia, Columbia MO 65211

Missouri State Beekeepers Association

P.O. Box 448 Oak Grove, MO 64075

www.mostatebeekeepers.org



Falling down: Is this what your equipment looks like? Our upcoming Spring Meeting is a great time to pick up supplies for the coming beekeeping season. Save on shipping costs by ordering ahead of time from any of the meeting vendors listed on page 9. Even if you can't make the meeting, please support our newsletter advertisers.

This newsletter is published six times per year, in even months. Submissions are due by the 15th of the month prior to publication.

The email edition is in color, and contains hyperlinks and bonus back-page material, while the print version is in black-and-white. If you are a member currently receiving the printed newsletter and you wish to upgrade, just send an email to editor@mostatebeekeepers.org with "email newsletter" in the subject line. I'll reply with confirmation, and add you to my list.

Advertising rates are as follows:	Business card size	\$15.00	Half page	\$50.00
	Quarter page	\$35.00	Full page	\$100.00

Classified Ads: Advertise one to three beekeeping-related items in a one-line ad at no charge. This service is for non-commercial MSBA members only, and is limited to one ad per item per calendar year.

Honey Trading Post: This is a free service to members wishing to buy or sell honey on a wholesale basis. Just email or call the editor with contact information and whether you are buying or selling. Pricing is between the interested parties.